

Issues and Opportunities

In June of 2022, CSC NL circulated a survey to capture top of mind feedback on the most pressing issues facing the community sector and its organizations. A total of 276 individuals from the sector responded, this is what we heard.

Strengths of the Community Sector

Respondents were asked to identify what they feel are the key strengths of the community sector.

Sector Strengths



A Positive Outlook for the Future

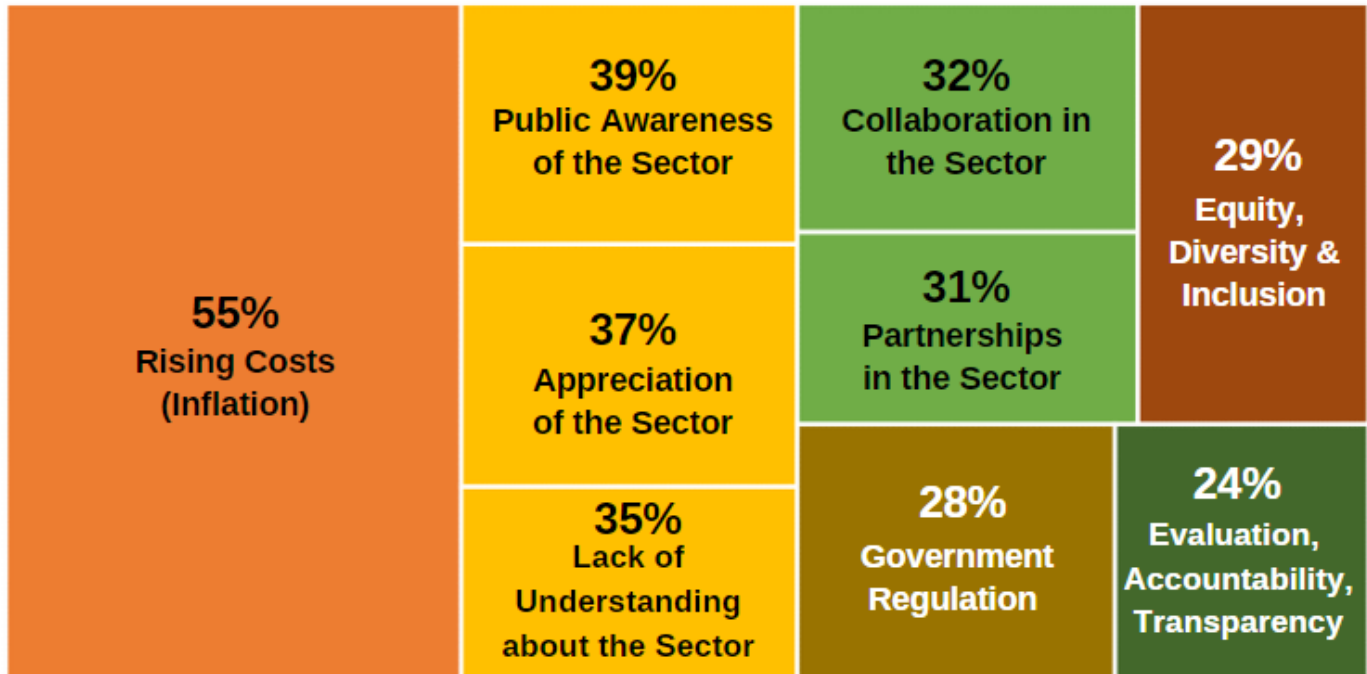
When asked how optimistic they are about the future of the sector in Newfoundland and Labrador on a scale of 1 - 100, respondents generally had a positive outlook with an average score of 58.



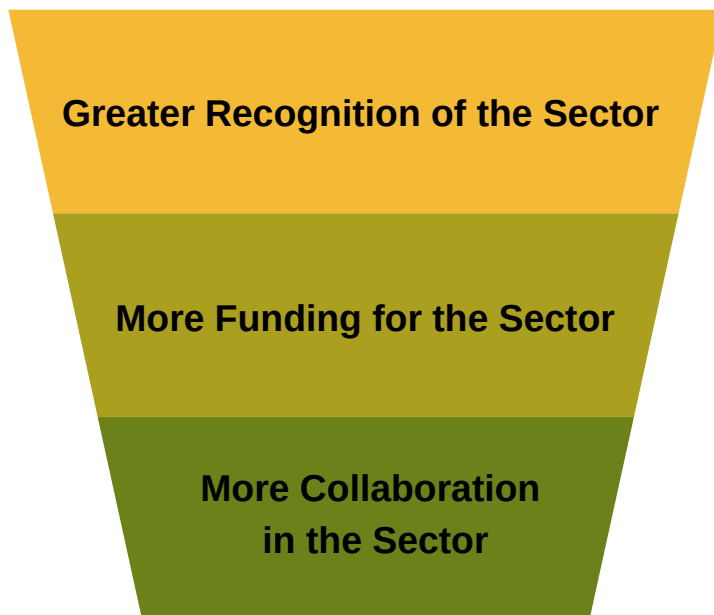


Challenges for the Sector as a Whole

Respondents were asked what they thought the biggest issues facing the community sector are.



A Wishlist for the Sector as a Whole



1

2

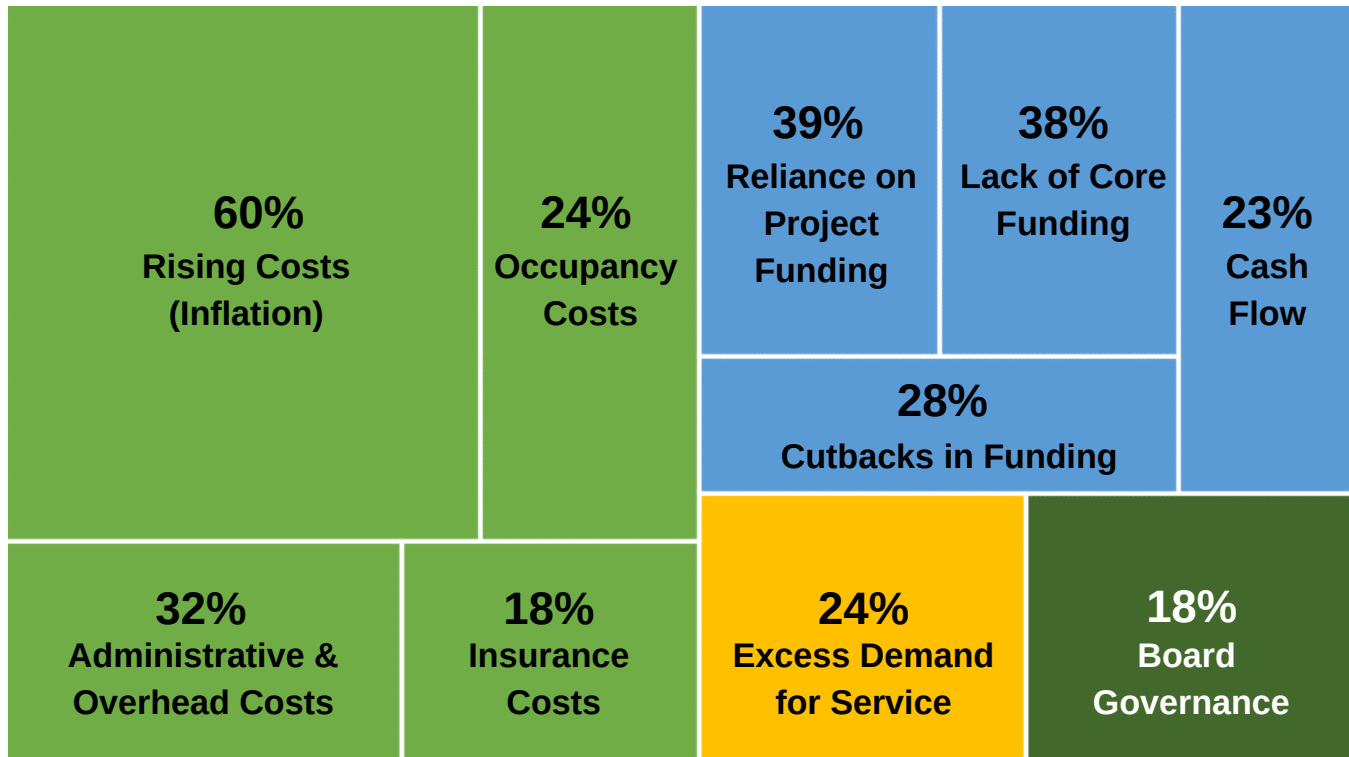
3

In addition to asking about the issues and challenges that the community sector is experiencing, respondents were invited to submit their own responses to what they wished for for the community sector. Three themes emerged from those responses.



Challenges for Organizations

Apart from questions about the sector, respondents were also asked what they think the biggest issues facing their individual organizations are.



A Wishlist for Organizations

Respondents were asked what would be on their Wishlist for the organization they are associated with, to help them deal with the challenges they are facing. Three themes emerged from their answers.

1

Additional Funding

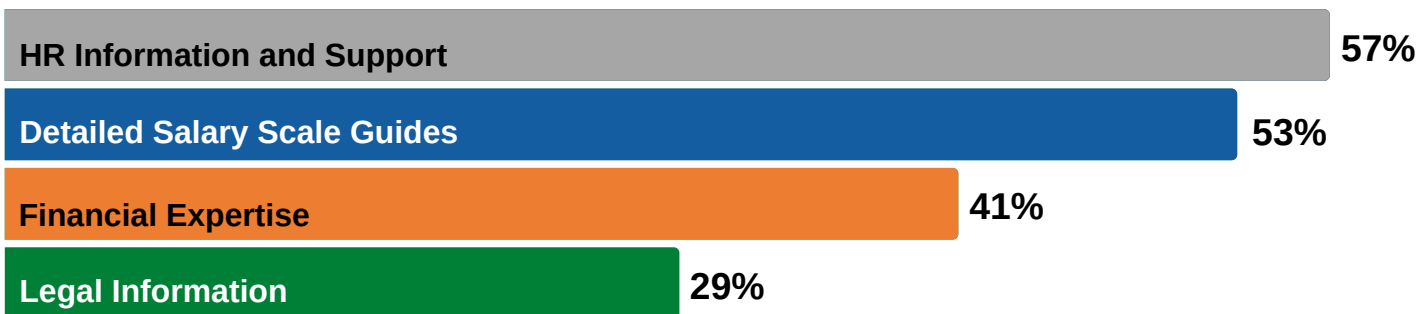
2

More Stable and Long-term Funding

3

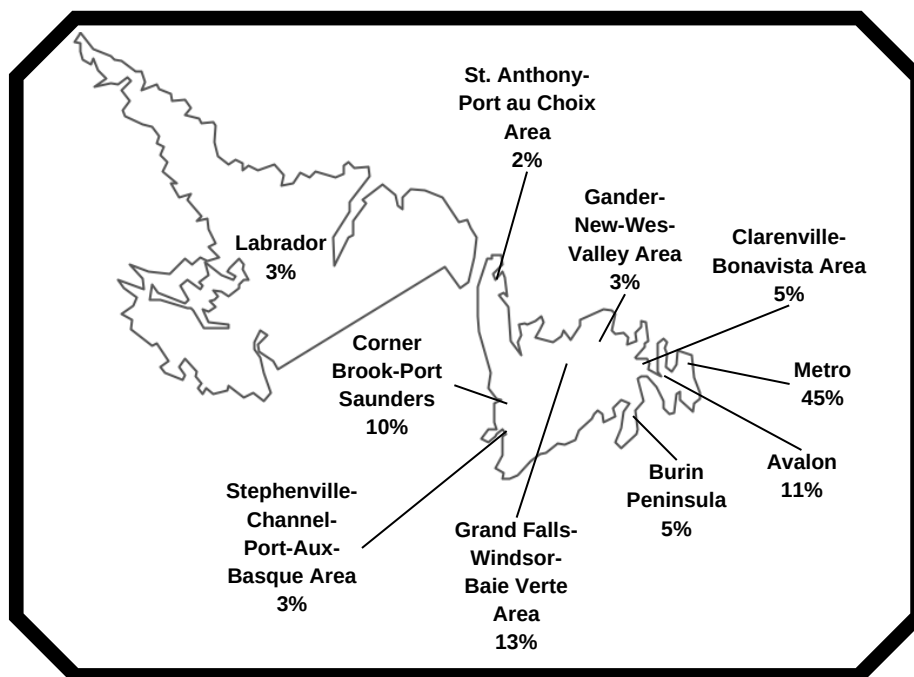
Help Recruiting and Retaining Paid and Unpaid Staff

Top Resources Organizations are Seeking



Who we Heard From

54% of respondents were volunteers and 46% were staff. They represented nonprofits (71%), charities (21%) and co-ops/informal organizations (5%), and were from all areas of the province.



Take Aways

Respondents overwhelmingly stated that the biggest issues facing the community sector are funding and sustainability. A lack of consistent funding from all sources, increasing operating costs, and an excess demand for services is putting significant pressure on organizations, and has resulted in substantial HR challenges. Further there is a sense that the community sector doesn't receive the recognition it deserves.

Organizations clearly stated that they need access to better, more province-specific salary information and HR support. Further there is a need for a concerted effort to promote and acknowledge the work and role that the community sector plays in this province. Greater public awareness of the sector and what it does will draw attention to these important organizations and enable them to continue to enrich our communities.

If you have any questions or concerns related to this survey or the information contained herein please contact CSC NL by phone at 1-866-753-9860 or by email at research@cscnl.ca.