

Finding Sustainability in Rural Revenue Diversification




Terri Byrne

**Manager of SABRI Innovation,
St. Anthony Basin Resources Inc.**

**Community Ideas Festival
April 2026**

St. Anthony Basin Resource Inc.



A scenic view of a fjord in a rural, mountainous area. The water is a deep blue, and the surrounding hills are covered in green grass and some rocky outcrops. In the foreground, a white boat is partially visible on the grass. The sky is overcast with light clouds.

Utilization of our northern shrimp allocation for economic development in our communities, driving growth while preserving our rural character.

The Mission Statement

Community-Led Governance From Day One

The board includes 16 regional communities, with harvesters, plant workers, business leaders, and local municipal reps.



MEET THE TEAM



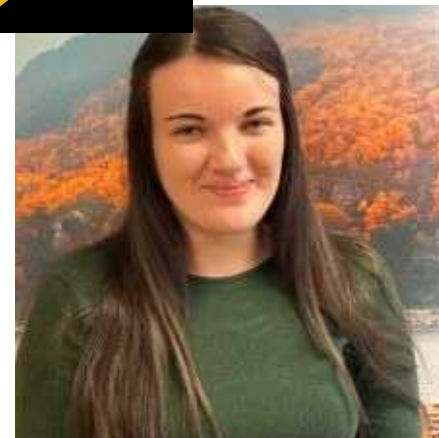
Hon. Christopher Mitchelmore, ECNL
Chief Executive Officer



Glenda Burden
Administrative Director



Laurie Coles
Property & Transit Manager



Felicia Hillier
Research and Sabri Farms Manager



Terri Byrne
Innovation Manager

The Foundation

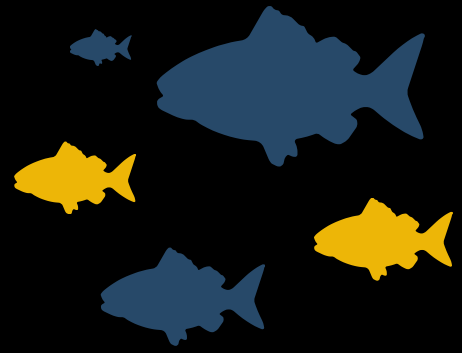
**St. Anthony Basin
Resource Inc. (1997)**

**St. Anthony Seafoods
(1999)**

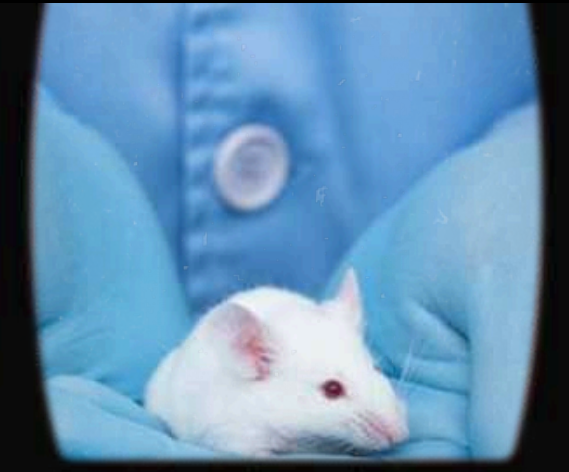
Aquaculture Farm (2003)

**St. Anthony Cold Storage
(2004)**





Innovation in



SABRI's Blue Basin

SABRI ESTATES & SUITES DEVELOPMENT



GREEN INITIATIVES



**Successful Pilot Season for
SABRI Hydroponic Farm**



Wind Power Development



Transit & Tourism Connection



**Fixed-Route Rural
Transit Service**

**Cruise to Community
Tourism Link**

**Community Impact
Partnerships**

**Accessible Services &
Tours**

New Horizons



SABRI
INNOVATION



Closing Gaps for Sustainability

- 2025 revenue totaled \$90,000
- Operating Budget of \$120,000
- Year 2 of operation complete
- 5 Year goal for sustainability



THANK - YOU FOR YOUR TIME



terribyrne@sabrinl.com

